

The future's bright, the future's CAD/CAM!

Simon Caxton and Lee Wood encourage dentists to embrace the evolution of digital dentistry

The past decade has seen some considerable developments in technology and we are seeing more and more dental professionals make the switch from analogue to digital. This is especially true when considering the continuous advancements seen with CAD/CAM, as clinicians begin to appreciate they too can benefit from this technology, and with minimal investment.

In this time we have seen a shift from 2D to 3D software, and the progression in our level of work, accuracy and precision is remarkable and we're certain it's only set to get better. Such developments meant that when setting up our lab, CAD/CAM became one of our 'must-have' accessories to maintaining an efficient and productive workflow in the 21st Century.

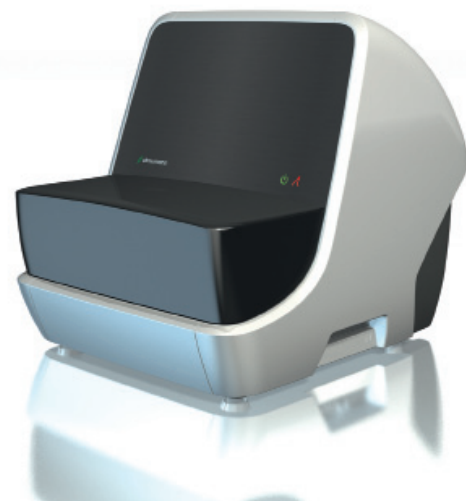
Quality & control

Having invested in the Straumann Cares CAD/CAM system only five months ago we have already seen a significant difference in the quality of restorations we create, and consequently an increased level of satisfaction from

our clients. The reason behind this is that we now have complete control over the designs of frameworks, whereas before we were sending them out to third parties and there were no guarantees the quality would be to our standards, or that we'd even receive them back in time. With CAD/CAM we are confident that everything we design and process for production will return to the lab as per our exact specifications, consequently reducing the need for remakes.

Clinicians appreciate the benefits of us working with the system too as they don't have to change their clinical technique. Preparations can be cut in exactly the same way as for a conventional restoration and then they simply send the impression in the usual way. We then scan the model and use visual 3D software to design the restoration to their specifications. These possibilities mean that if a client sends us a large case we can plan our options right from the start and have complete confidence that we can deliver exactly what we are offering. The result is less worry for us and more satisfied clients.

The evolution of CAD/CAM has had a positive effect on



time and efficiency, while productivity within the lab has increased dramatically by up to 25%. The time to design and process a coping has been reduced by a third and when the restorations are returned to the lab it takes as little as 10 minutes to finish and process, whereas before we would spend almost an hour. Despite this reduction in time, the quality of the final restoration is still not compromised. Clinicians are now confidently placing a restoration that fits accurately at the first attempt, saving in chairside time and increasing patient satisfaction as well as enhancing the clinician to technician relationship.

Predictability & versatility

The cost of precious metals can spiral out of control for many a laboratory, which is ultimately passed onto the clinician. One of the reasons we chose Straumann Cares CAD/CAM over other systems is its extensive range of materials and their cost-effectiveness, making it a refreshing investment even in these cost-conscious times.

The strength and results achieved with IPS e.max are fantastic but as a result of the work we primarily undertake we predominantly use Straumann's Cobalt-Chrome, Coron. Its light, highly biocompatible properties are similar to that of precious metals, making it an ideal and economical material for frameworks over implants and bridgework. Similarly, the ceramic zirconium-dioxide material Zerion offers reliability when producing aesthetic large-span bridges.

Ultimately, the system and its array of materials offers predictability at a fraction of the cost; we know exactly how much each unit costs and can pass these savings onto our clients, making the production of highly aesthetic restorative solutions versatile and cost predictable.

The future is CAD/CAM

Digital dentistry is here to stay and Straumann Cares CAD/CAM is facilitating the provision of accurate, aesthetic, high-quality restorative solutions for the ultimate benefit of clinicians and their patients.

Any clinician looking to progress with digital dentistry should be embracing CAD/CAM. We're looking forward to working more closely with our client and helping them appreciate how existing techniques for preparation and impression taking can all be added into the CAD/CAM process to ensure more accurate treatment outcomes.



'Speakers Corner' – Stand H09 at Showcase

Simon Caxton and Lee Wood set up their laboratory, Simplee Dental Ceramics, in 2010 after working as dental technicians for many years. They will be available to speak at this month's BDTA Dental Showcase 2011, where they will be offering advice and answering any clinical or technical questions you may have at Straumann's 'Speakers Corner' on stand H09. Straumann staff will also be on hand throughout the three-day event to discuss CAD/CAM in greater detail.

For more information about Simplee Dental Ceramics, call 01277 280652 or visit www.simpleedentalceramics.com.

For more information about Straumann Cares CAD/CAM, call 01293 651230 or visit www.straumann-cares-digital-solutions.com.